

3" Box & Sleeve Tutorial

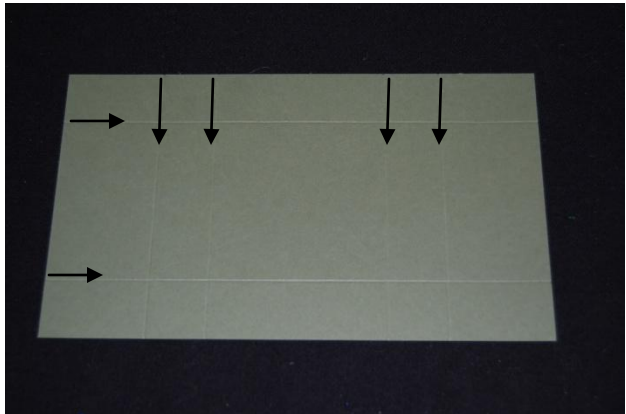


Supplies

Box Body - 8 1/2" x 5"

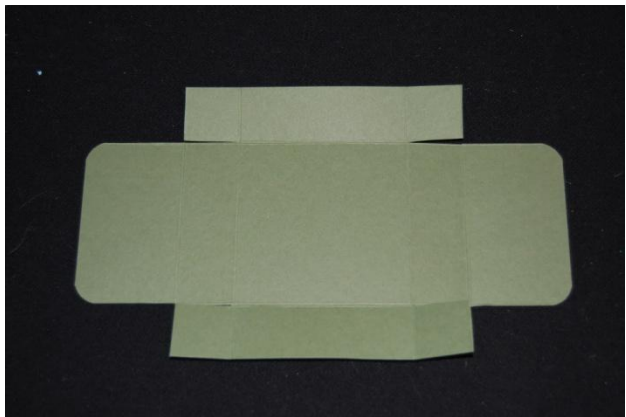
Box Sleeve - 9 1/2" x 3"

Box Sleeve Layers - 2 3/4" x 2 3/4" and 2 1/2" x 2 1/2"



Using the photo as a guide, score along the long edge at 1 3/4", 2 3/4", 5 3/4" and 6 3/4".

Along the short edge, score at 1" and 4"



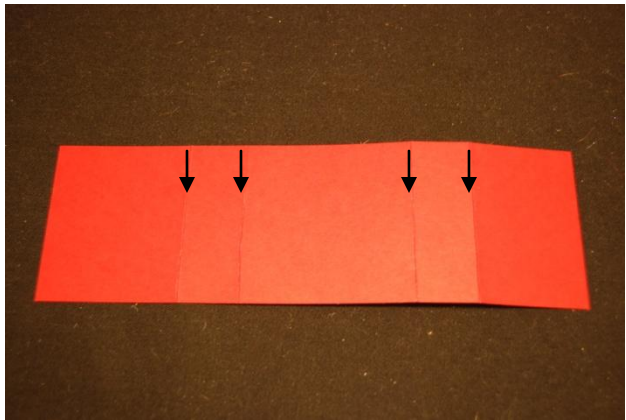
Score along the lines and, once again using the photo as a guide, trim away the 4 outer rectangles and then make 1" incisions horizontally at the corners.

Round the edges of the 2 outer flaps.



Fold the tabs into the body of the box and secure using sticky strip or Tombow Mono Adhesive.

You will see from the picture that I lined my box by cutting one strip a shade under 1" and scoring at the corners, then cutting a square, a shade under 3" to fit in the bottom.



To make the outer sleeve, score the $9\frac{1}{2}$ " x 3" piece of cardstock along the long edge at $1\frac{7}{8}$ ", 3", 6" and $7\frac{1}{8}$ ".

Fold along the scores and wrap the sleeve around the body of the box to fit it. Secure the cross-over sections at the bottom with sticky strip.



Decorate the outside of your box and you desire!

This box is perfect for small chocolates, jewelry or a gift card!