

## Kleenex Pouch



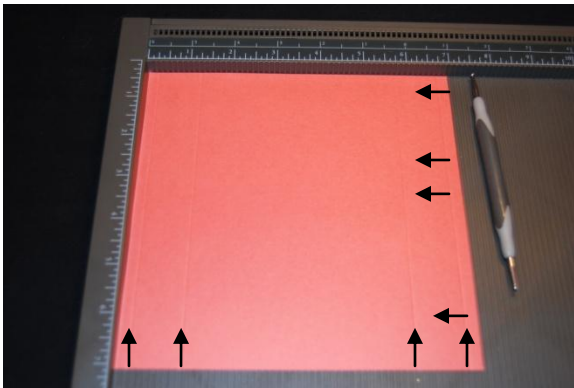
### Supplies

7x7" Cardstock

$\frac{7}{8}$ " x 15" Decorative Strip

$2\frac{1}{8}$ " x  $4\frac{3}{8}$ " Decorative Top MAT

2" x  $4\frac{1}{4}$ " Designer Paper

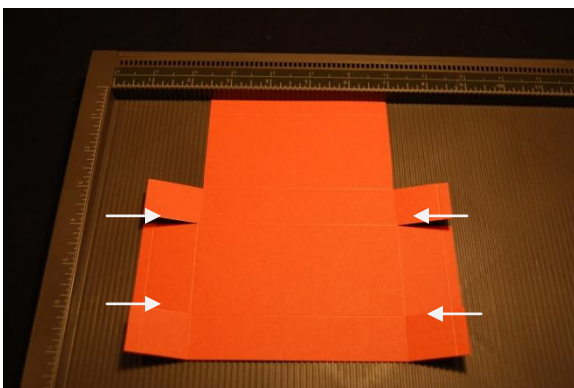


Score your 7x7 piece of cardstock as follows:

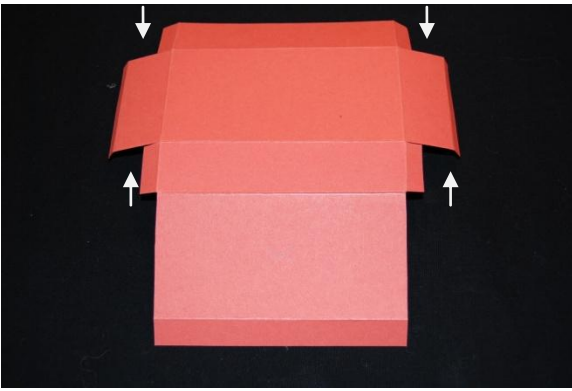
1", 3  $\frac{1}{4}$ ", 4  $\frac{1}{4}$ ", 6  $\frac{1}{2}$ "

Flip it 90° and score as follows:

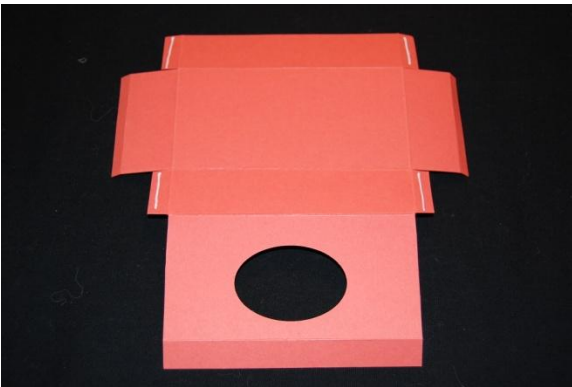
$\frac{1}{4}$ ", 1  $\frac{1}{4}$ ", 5  $\frac{3}{4}$ ", 6  $\frac{3}{4}$ "



Making sure the  $\frac{1}{2}$ " score line is at the top and horizontal - cut according to the photograph. Cut away the 2 upper outer edges and then make snips in the 4 places shown.



Turning the box so the 1/2" score line is closest to you, trim away the sections shown, leaving a 1/4" to 1/2" flap. Use the picture to guide you.



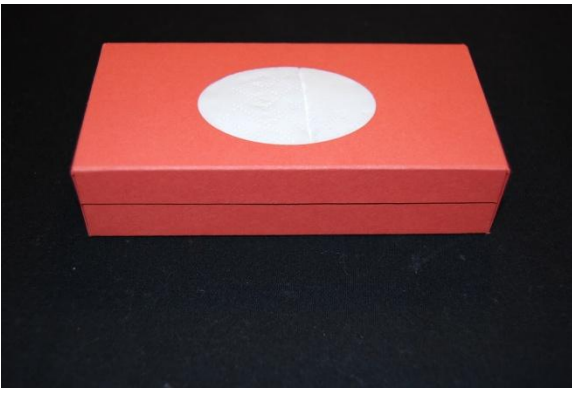
Using the extra wide oval punch, make a hole in the lid. Place Tombow Mono Glue on the 4 flaps you just created.



Fold in the tabs and adhere them to the sides to form your pouch.



Now you can place your Travel Size Tissues inside the pouch and seal the lid.



Your Tissue Pouch will look like this. Now you can decorate the outside. I used 7/8" x 12" strips to go around the outside, you need an extra 1 3/4" at the centre-back to fill in the slight gap.

You can make any sort of hole in the top of your 2 1/8" x 4 3/8" decorative panel.



Here I used the new Stampin' Up Framelits which works well.



On the Christmas Pouch, I used the scallop oval and plain oval punches to make the frame around the hole.

Have fun making your own Travel Tissue Pouch - please let me know you've made one so I can come and see ☺